

# 3M™ Adflo™ Powered Air Respirator

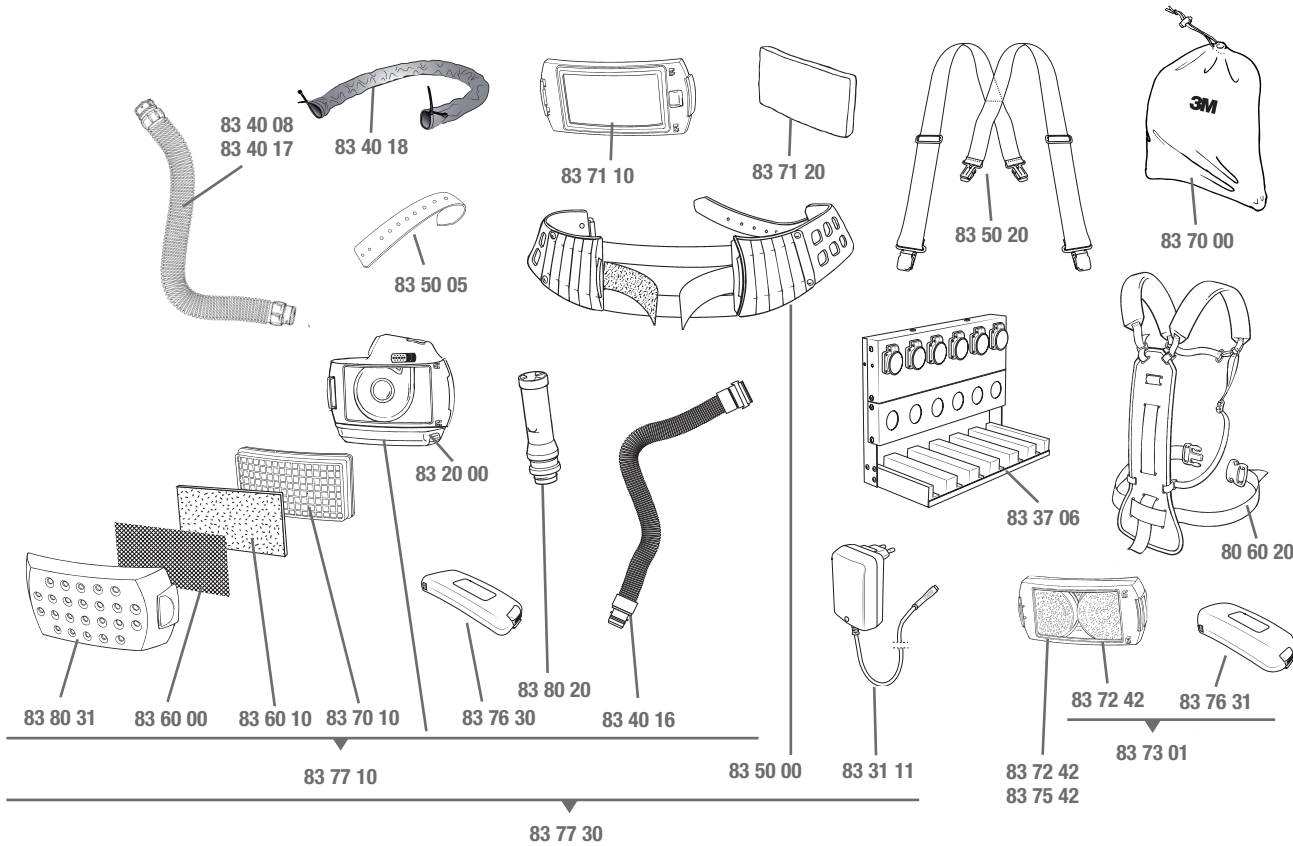
To optimize the lifetime of your welding equipment and avoid the additional cost of replacement, regular maintenance is important. Replace all damaged parts immediately to ensure correct levels of protection.

## Before use

- **Battery.** Ensure that it's adequately charged and fitted correctly.
- **Turbo unit.** Inspect the unit for damage and that it's firmly fixed to the belt. Ensure filters are correctly fitted.
- **Breathing tube.** Inspect the tube and connections to ensure they are free from splits and holes. Replace if damaged, deformed or leaking any air. To extend the life of the breathing tube, use a tube cover or the heavy-duty rubber breathing tube.
- **Air flow check.** Fit the breathing tube to the turbo unit and attach the airflow meter in the other end of the tube and switch on the turbo. If the ball does not rise above the line, continue fault finding.
- **Alarm check.** Cover the air outlet of the airflow meter with your hand until an audible warning is heard and the red indicator illuminates. Remove your hand. The alarm should now stop.

## After use

- **Clean the equipment.** Wipe the turbo with a moist tissue or cloth. If you suspect that the inside of the breathing tube is dirty, it must be changed. DO NOT rinse, immerse in water or clean with solvents. DO NOT attempt to remove contamination on filters using for example compressed air as this will damage the filters and the warranty will be invalidated.
- **Replace damaged parts.** Replace all damaged parts to guarantee the function of the respirator. Worn out components should be disposed of according to local regulations.
- **Spark arrestor.** Replace if deformed and no longer fitting well.
- **Prefilter.** Replace if it's too dirty, to extend the life of the particle filter, saving money while also helping the battery run-time.
- **Particle filter.** Check the battery indicators position and replace if the red LED is lit. Otherwise, replace whenever the battery operating time becomes too short, or when "fully loaded" filter triggers low airflow alarm.
- **Gas filter.** Replace the gas filter according to your work place requirements. Do not wait until you can sense odours or smells.
- **Odour filter.** Replace any time you smell unpleasant odours. Odour filter is not required if gas filter is used.
- **Storage.** Put the battery/turbo unit on charging after each use. When stored, recharge every six months. Store the unit in a dry, clean area away from direct sunlight, high temperatures and solvents. For example use the Adflo storage bag.



Part No	Description	Part No	Description	Part No	Description	Part No	Description	Part No	Description
83 77 10	Adflo respirator with self-adjusting breathing tube QRS, airflow indicator, prefilter, spark arrestor, particle filter and battery.	80 60 20	Backpack.	83 40 17	Breathing tube, heavy-duty rubber, with QRS connection.	83 60 10	Prefilter, pkg of 5.	83 71 20	Odour filter replacement pad.
83 77 30	Adflo respirator with self-adjusting breathing tube QRS, breathing tube, airflow indicator, prefilter, spark arrestor, particle filter, battery, belt and charger.	83 20 00	Turbo assembly, without filter, without filter cover.	83 40 18	Flame resistant breathing tube cover.	83 60 80	Prefilter, pkg of 80.	83 72 42	Gas filter A1B1E1.
83 77 31	Adflo respirator as in 83 77 30, but with heavy-duty battery.	83 31 01	Battery charger for NiMh batteries.	83 50 00	Belt.	83 70 00	Storage bag.	83 73 01	Gas filter kit: A1B1E1 filter and Li-ion Heavy-Duty battery.
		83 31 11	Battery charger for Li-ion batteries.	83 50 05	Front part, belt.	83 70 10	Particle filter P SL.	83 75 42	Gas filter A2.
		83 37 06	Battery charging stand 6-position.	83 50 10	Quick connection for belt (not shown).	83 70 20	Particle filter P SL, pkg of 20.	83 76 20	NiMh Battery (standard).
		83 40 08	Breathing tube with silencer, non-QRS.	83 50 20	Braces.	83 70 80	Particle filter P SL, pkg of 80.	83 76 21	NiMh Battery Heavy-Duty.
		83 40 16	Breathing tube, self-adjusting (52,5 to 85 cm), with QRS connection.	83 60 00	Spark arrestor.	83 71 10	Odour filter.	83 76 30	Li-ion Battery (standard).

